

What you should know about MRI Guided Breast Biopsy

The Vanguard® MRI table allows for increased patient comfort during the biopsy. The open design allows for improved access for biopsies.

Our fellowship-trained radiologists have extensive training and experience in breast imaging and biopsy procedures.

The American Cancer Society recommends having your breast MRI at a facility that also performs MRI guided breast biopsies.

The COMRI staff is dedicated to making the procedure as comfortable and stress free as possible.

If you have any questions or would like more information feel free to contact us at:

**541-598-3223 or
888-382-9383**

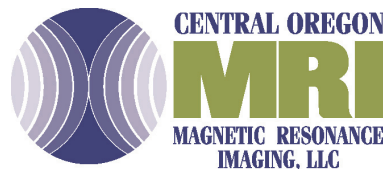
To view a video of a breast MRI visit:

www.corapc.com

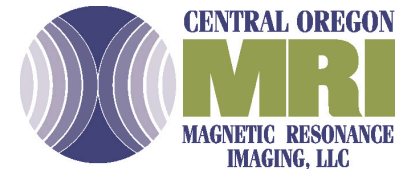
The new standard for breast MRI: Vanguard®



The highest quality in patient care



A proud partner of Cascade Healthcare Community

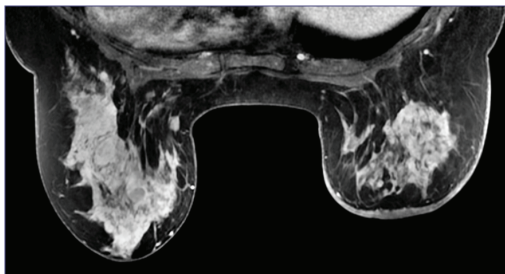
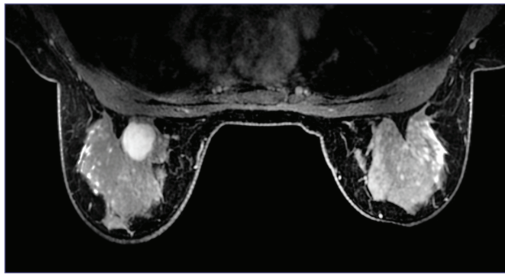


A proud partner of Cascade Healthcare Community

The new standard in breast MRI: Vanguard®

What is new in breast MRI?

Central Oregon MRI and St. Charles Medical Center have acquired the state-of-the-art Sentinelle Vanguard® imaging system. The dedicated Breast MR Coil System provides unprecedented improvements in image quality, ease of access for biopsies and patient comfort.



The anatomy of each patient is different, and the patented coil system used by Vanguard® customizes the position of the coil for each breast of each patient, resulting in higher-quality images.

Who should have a breast MRI?

Women with the following conditions have been shown to benefit from Breast MRI:

- Dense or cystic breasts
- High risk for breast cancer
- Personal history of breast cancer
- Staging for a new diagnosis of breast cancer

What can you expect?

Before your breast MRI you will have an IV needle placed in your arm for the injection of contrast media. You will then be assisted on to the MRI scanner by an assistant who will make sure you are as comfortable as possible.

During the procedure you will lie face down on the specially designed Vanguard® breast imaging table.

The imaging procedure will last approximately 30 minutes. It is very important to lie as still as possible for the whole procedure. At a point during the procedure a contrast solution is injected through the IV. This solution is important for better visualization of the breast anatomy and blood flow.



What happens after the exam?

After the procedure is completed you will be assisted off of the scanner. The IV will be removed and you are free to go.

The images will be processed on a specialized computer for better interpretation of the image data.

Where should you go for your scan?

Please come to the St. Charles Bend campus and park on the north side of the building. Enter through the lower level entrance designated MRI/CT. Once inside, follow the signs to the MRI/CT reception area.